

HD207...; HD227...; HD206...; HD226...



HD207..., HD227..., HD206..., HD226...

MINIDATALOGGER TEMPERATURE - TEMPERATURE / RELATIVE HUMIDITY

HD206.../HD226... and HD207.../HD227... series data loggers are low-cost, rugged instruments, for a long-term reliable monitoring of temperature and temperature/relative humidity measurements. They are available in different versions: with or without LCD display, with temperature sensor either inside or outside the instrument housing, or with cable connection. The analysis of acquired data is made using Delta Log2 software for Windows. The datalogger functions of Start, Stop, Configuration, Data Download and Setting of storage interval are selectable either from keyboard or from a computer. Through a computer, you can define a password to enable the access to configuration data.

Typical applications are: monitoring of temperature/humidity during transportation, storage of fresh or frozen foods, fruit, vegetable products and flowers, pharmaceuticals, sensitive and photographic products, paper as well as laboratory activities in general. Configuration and data download to a PC are very easy: DeltaLog2 dedicated software guides the operator step by step.

Accredia calibration certificates for all versions can be issued.

Excellent protection against atmospheric agents.

Temperature and relative humidity high accuracy all over the range.

Resolution: 0.1°C, 0.1% RH.

Sampling interval freely selectable by the user.

Manual control of acquisition start and stop either through a pushbutton or a clock.

Fast download of stored data.

240.000 data capacity on a single channel and 80.000 data capacity on three simultaneous channels.

Flash memory for holding data storage even when the instrument is without battery or with battery low.

Long life lithium battery replaceable by the user.

Indication of flat battery.

All models provide a visual indication while the instrument is acquiring.

Technical Specifications

Versions with LCD Versions without LCD	HD207 HD227	HD207-1 HD227-1	HD206-1 HD226-1	HD206-2 HD226-2	
Temperature sensor	NTC 10kΩ @ 25°C				
RH Sensor	---		Capacitive		
Sensor Location	Temperature	Internally mounted Additional temperature probe available as an option	Mounted under the front cover Additional temperature probe available as an option	Mounted under the front cover Additional temperature probe: optional for HD226-1 model, not available for HD206-1 model	
	Relative Humidity	---	---	Mounted under the front cover Internal temperature sensor on HD226-2 model Temperature and relative humidity combined probe with cable	
Measuring and Operating Range	Temperature	-30...+80°C instrument -40...+105°C probe with cable	-30...+80°C instrument -40...+105°C probe with cable	-30...+80°C instrument -40...+105°C probe with cable	
	Relative Humidity	---	---	0...100%RH 0...100%RH	
Accuracy	Temperature	±0.3°C in the 0...70°C range ±0.4°C outside the above range			
	Relative Humidity	---	---	±2.5%RH (10...90%RH) ±3.0%RH (in the remaining range)	
Resolution	Temperature	0.1°C	0.1°C	0.1°C	0.1°C
	Relative Humidity	---	---	0.1%RH	0.1%RH
IP Protection	67	54 instrument 67 probe with cable	54 instrument 67 probe with cable	67 instrument 54 combined probe with cable	
Number of channels	1 + 1 external probe (optional)	1 + 1 external probe (optional)	2 (HD206-1) 2+1 (HD226-1)	2 (HD206-2) 2+1 (HD226-2)	
Storage Capacity	240.000 measurements with one active channel 120.000 measurements per channel with two active channels 80.000 measurements per channel with three active channels				
Reading Interval	Selectable among 1, 5, 10, 15, 30sec, 1, 5, 10, 15, 30min, 1hour				
PC interface	Through a passive optoisolated RS232 serial port, 9600 bauds				
Software	DeltaLog2 – Compatible with Windows operating systems				
Display (where provided)	3½ digit LCD, low battery symbol, 4 indicators of functional modes				
LED (where provided)	LED for operating status indication (HD226... and HD227... models)				
Power Supply	3.6V – 1Ah Replaceable lithium battery				
Battery: typical life	3 years (with a measurement every 10sec)				
Dimensions / Weight	52x88x36mm / 240gr				
Housing	Polycarbonate / rubber				
Instrument Connector	8-pole female MiniDIN				
Probe Connector	8-pole male MiniDIN				

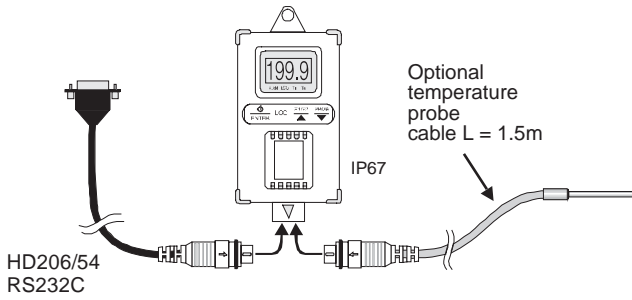
Time	Temp (°C)	RH (%)
2002/01/18 14:00:00	21.2	66.5
2002/01/18 14:00:01	21.2	66.5
2002/01/18 14:00:02	21.2	66.5
2002/01/18 14:00:03	21.2	66.5
2002/01/18 14:00:04	21.2	66.5
2002/01/18 14:00:05	21.2	66.5
2002/01/18 14:00:06	21.2	66.5
2002/01/18 14:00:07	21.2	66.5
2002/01/18 14:00:08	21.2	66.5
2002/01/18 14:00:09	21.2	66.5
2002/01/18 14:00:10	21.2	66.5
2002/01/18 14:00:11	21.2	66.5
2002/01/18 14:00:12	21.2	66.5
2002/01/18 14:00:13	21.2	66.5
2002/01/18 14:00:14	21.2	66.5
2002/01/18 14:00:15	21.2	66.5
2002/01/18 14:00:16	21.2	66.5
2002/01/18 14:00:17	21.2	66.5
2002/01/18 14:00:18	21.2	66.5
2002/01/18 14:00:19	21.2	66.5
2002/01/18 14:00:20	21.2	66.5

Data display in tabular form.

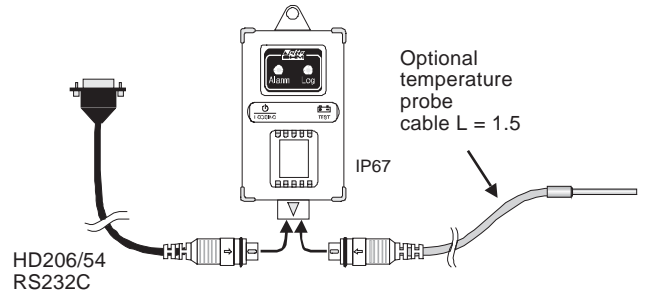
Models with LCD Display

Models without LCD Display

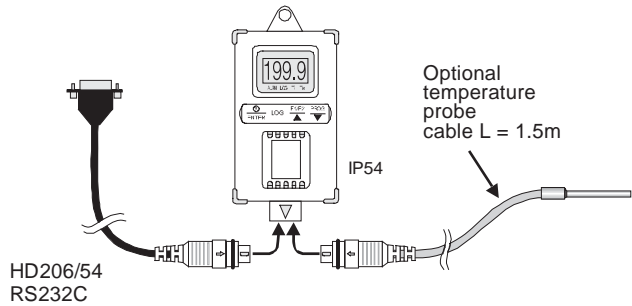
HD207 Internal temperature sensor



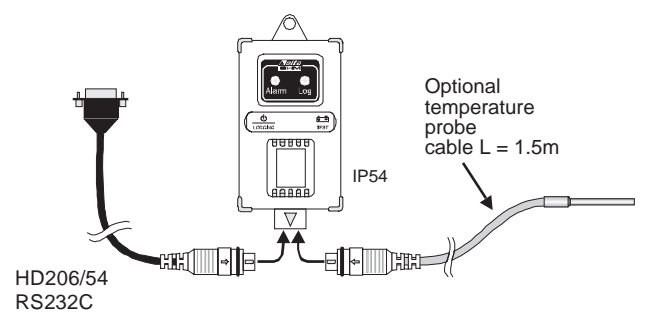
HD227 Internal temperature sensor



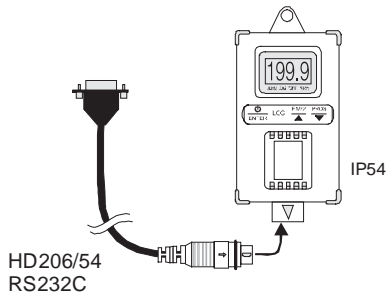
HD207-1 External temperature probe



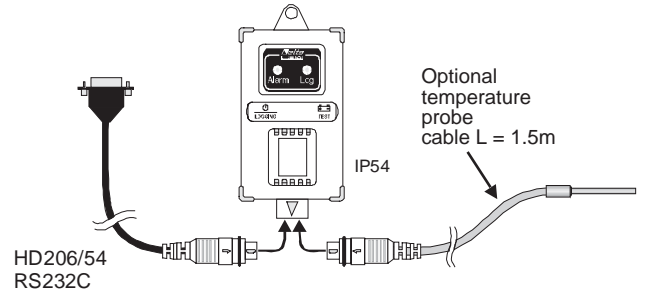
HD227-1 External temperature sensor



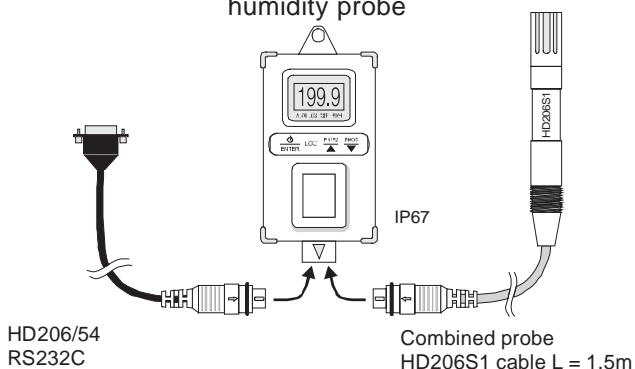
HD206-1 External temperature and relative humidity sensor



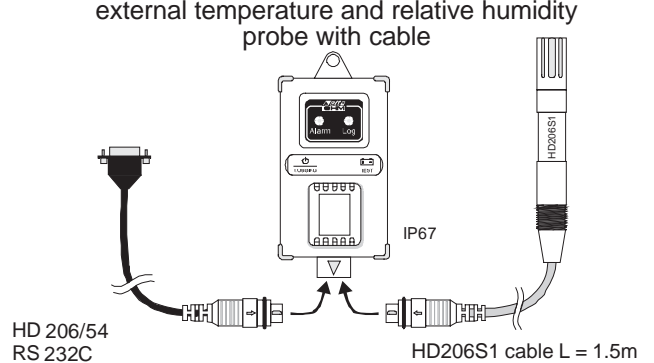
HD226-1 External temperature and relative humidity sensor, external temperature probe with cable



HD206-2 Temperature and relative humidity probe



HD226-2 Internal temperature sensor and combined external temperature and relative humidity probe with cable



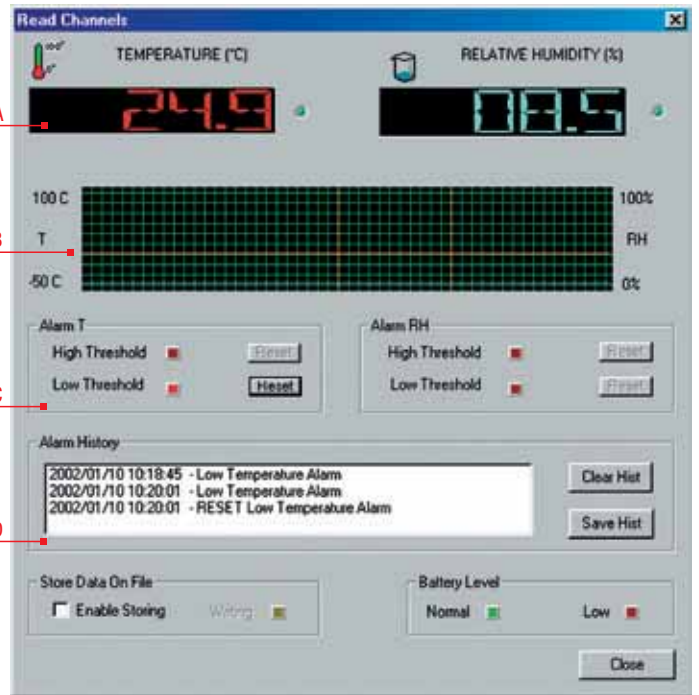
Ordering Code
Minidatalogger

H D 2 0 6 - 2

- No Indication = Internal Sensor
 - 1 = External Sensor/s
 - 2 = Model with cable L = 1.5m
-
- 6 = Relative Humidity and Temperature Measurement
 - 7 = Temperature Measurement
-
- 0 = LCD Display Version
 - 2 = LED Version

Ordering Codes of Minidatalogger Probes and Accessories

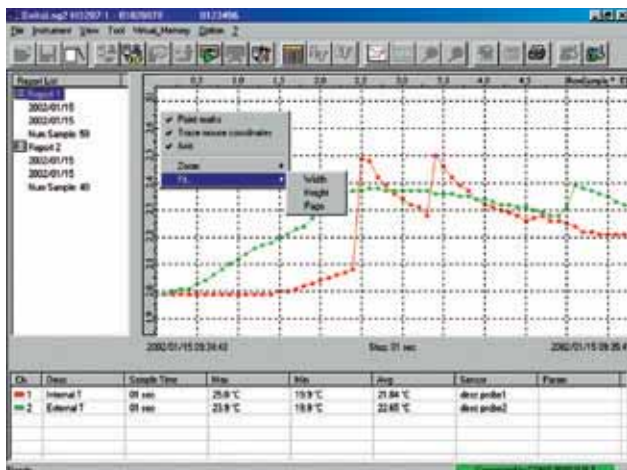
- TP207:** immersion temperature probe with NTC sensor for measurements in liquids, powders and gas; total length: 45mm, diameter: 3mm, cable L = 1.5m, material: stainless steel.
- TP207P:** pointed/immersion temperature probe with NTC sensor for food industry applications; sheath length: 125mm, diameter: 4mm, cable L = 1.5m; material: stainless steel.
- TP207A:** temperature probe with NTC sensor for a fast measurement of the air temperature; sheath length: 125mm, diameter: 3mm, cable: L = 1.5m; material: stainless steel.
- HD206S1:** relative humidity/temperature combined probe, length: 109mm, diameter: 14mm; cable: L = 1.5m.
- HD206/54:** RS232C serial connection cable; cable: L=1.5m; 9-pole standard connector/ 8 pole minidin
- HD75:** Calibration saturated solution at 75%RH
- HD33:** Calibration saturated solution at 33%RH
- DeltaLog2:** Software to download and show data on PC for HD 206/226 – HD 207/227 series minidatalogger. Supplied with HD206/54 serial cable to connect the minidatalogger to a PC. MiniDIN 8-pole male connector and Sub D 9-pole female connector. Cable L= 1,5 m.
- C.206:** Cable with USB converter to connect instruments directly to USB port of PC.
- BL.1:** Li-SoCl2 3.6V 1Ah battery



- A) Measurement registered by the two input channels of the instrument.
- B) Diagram of the two channels. The vertical yellow lines represent the storage interval activated through the "Store Data On File" command.
- C) Alarm current status. The red LED turns on when the setpoint is exceeded. Press the Reset key to clear it.
- D) Alarm history: it registers all the alarms occurred since the "READ CHANNELS" window was opened.

Specifications of the minidatalogger optional probe

CODE	IMMERSION PROBE (NTC)	TERMINATION
TP207	Probe for measurements in liquids, powders and gas NTC sensor position 	
TP207P	Pointed/Immersion stainless steel probe for food industry applications 	
HD206/S1	TEMPERATURE AND RELATIVE HUMIDITY COMBINED PROBE 	
HD206/54	PC - MINI DATALOGGER ↔ RS232C CONNECTION CABLE 	



Data display in graphic form.