

# TUSB3410 USB Driver

## Installation

---

For operating systems starting from Windows® XP.

### WARNING:

- **BEFORE INSTALLING UNCERTIFIED USB DRIVERS IN OPERATING SYSTEMS STARTING FROM WINDOWS 7, IT IS NECESSARY TO RESTART THE PC DISABLING THE DRIVERS SIGNATURE REQUEST.**

- **IN 64-bit OPERATING SYSTEMS, EVEN AFTER INSTALLATION IT IS NECESSARY TO DISABLE THE DRIVERS SIGNATURE REQUEST EVERY TIME THE PC IS RESTARTED.**

### Disabling the drivers signature request in Windows 7:

When Windows restarts, press F8 to display the "Advance Boot Options" menu, then select the "Disable Driver Signature Enforcement" option.

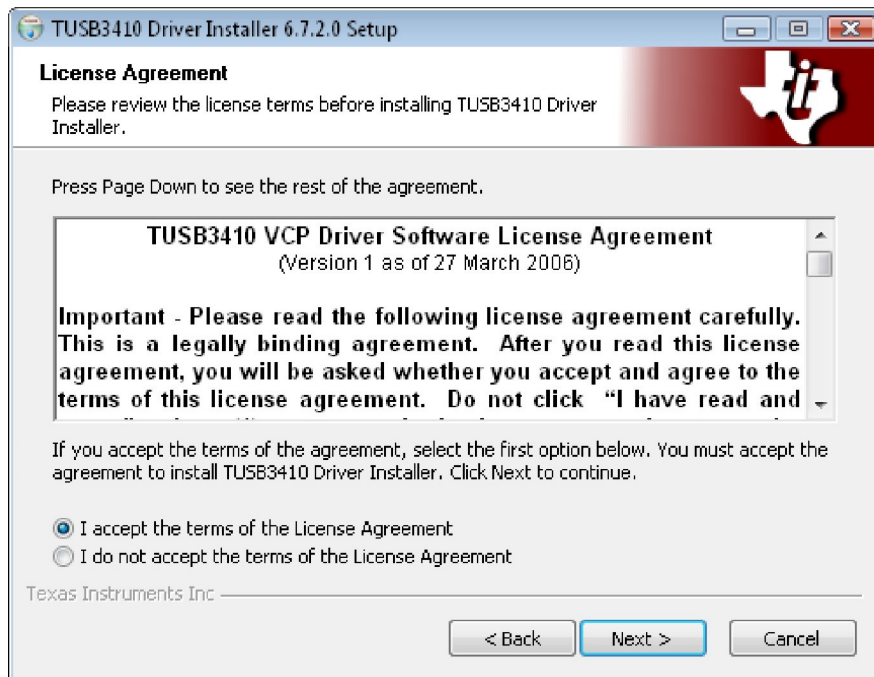
### Disabling the drivers signature request in later versions of Windows:

- Press together "Windows" and "R" keys.
- Write in the box that appears: **shutdown.exe /r /o /f /t 00** and confirm with OK.
- A blue screen called "Choose an option" will appear, select "Troubleshoot >> Advanced options >> Startup Settings >> Restart".
- After reboot, the advance startup options screen will appear, press the key corresponding to "Disable Driver Signature Enforcement" (F7).

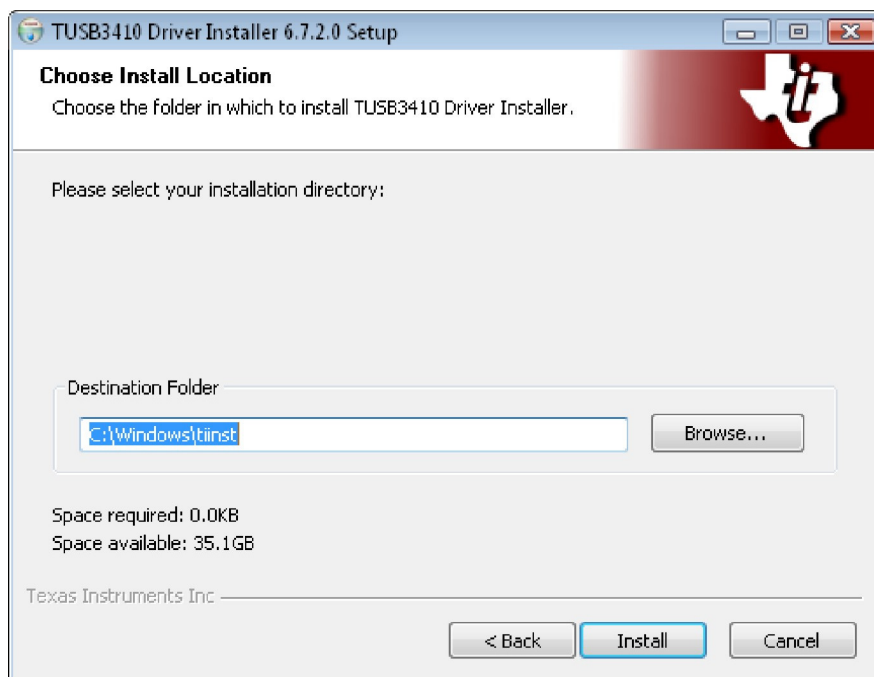
## INSTALLATION PROCEDURE

1. **Do not connect the instrument to the USB port until it is requested to.**
2. Right-click with the mouse on the file *autorun.exe* of the software package and select *Run as administrator*.
3. Select the language, then click on *Install USB Drivers*.
4. If there are multiple drivers, select the TUSB3410 driver.
5. The program verifies the presence of the drivers inside the PC:
  - If they are not present, the initial setup screen appears, press NEXT to proceed with the installation.
  - If they have already been installed, you are asked if you want to uninstall them.

6. The installation programme shows you the software licence agreement: in order to proceed, accept the terms of use and press NEXT:



7. The folder where drivers will be installed is indicated in the installation window. Select **INSTALL without making changes**.



8. Wait for the program to install the files. At the end you get the windows that confirms the correct installation of the drivers: press FINISH to close the installation program.
9. **Connect the instrument to the USB port and switch it on:** when Windows recognizes the new device, a message appears in the lower right side of the screen indicating that a new hardware has been found and the device driver installation is started. Wait for the message confirming that the "TUSB3410" device driver installation has been completed.

10. The driver installation is finished: at any further connection the instrument will be automatically recognized.

## Notes:

**Note 1.** If the instrument is connected to the USB port **before the installation of the driver:**

- In Windows XP systems, "*New hardware installation wizard*" window appears.
- In the systems starting from Windows Vista an installation error appears in the "*Device Manager*".

In any case, cancel the operation, disconnect the instrument and follow the procedure from the beginning of this guide.

**Note 2.** If you downloaded the drivers from Delta Ohm web-site:

- a. unzip "*Driver\_USB\_TUSB3410.zip*" file in a temporary folder of your PC.
- b. For Windows XP systems, run "*Setup.exe*" with a double click of the mouse.

For operating systems starting from Windows Vista, click with the right key of your mouse on "*Setup.exe*" file and select "*Run as administrator*".

- c. Proceed from point 5 of the installation procedure.

## How to verify the correct driver installation

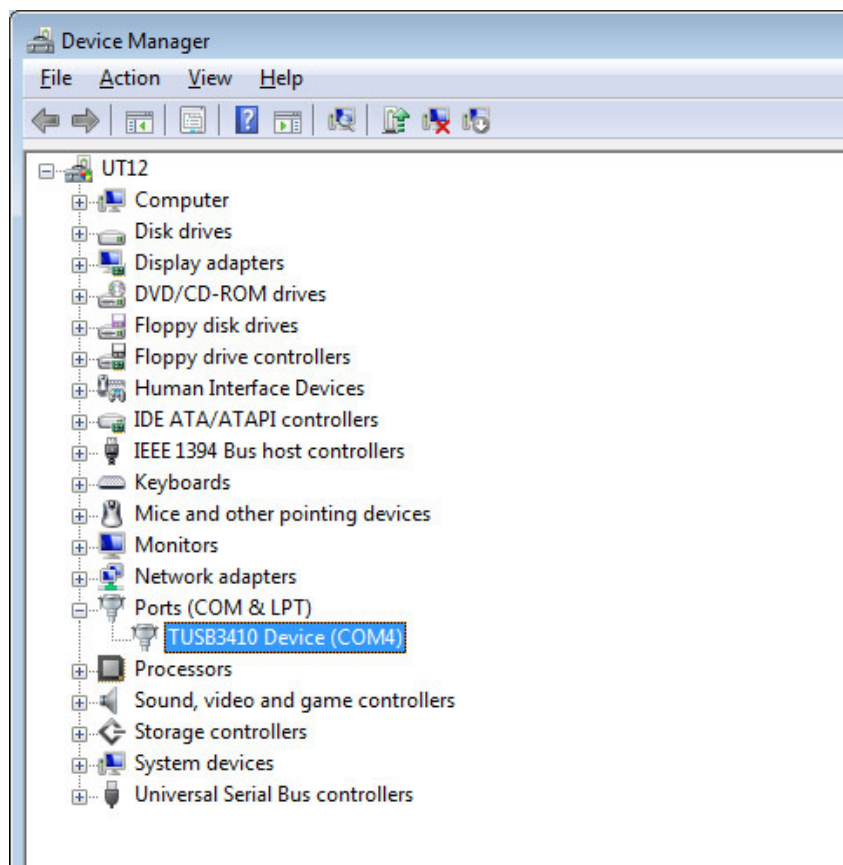
---

To verify if all the operation has been carried out correctly, open the "Device Manager" section of the Control Panel of the PC.

Connect the instrument to the USB port.

You should see *"Ports (COM & LPT) >> TUSB3410 Device (COM#)"*.

**The # value is the number assigned to the virtual serial port.**



When the USB cable is disconnected, this display disappears and appears again as soon as you re-connect the cable again.

## USB driver removal

---

In order to remove the USB driver from the system, proceed as follows:

1. Disconnect the instrument from your PC.
2. Open the "Add or Remove Programs" or "Programs and Features" section of the Control Panel of the PC.
3. From the list, select "TUSB3410" and press "Change/Uninstall".
4. The programme asks if you want to remove the drivers. Confirm by OK so to proceed to uninstall the drivers.
5. Wait for the drivers to be removed.
6. The removal of the USB drivers is finished.